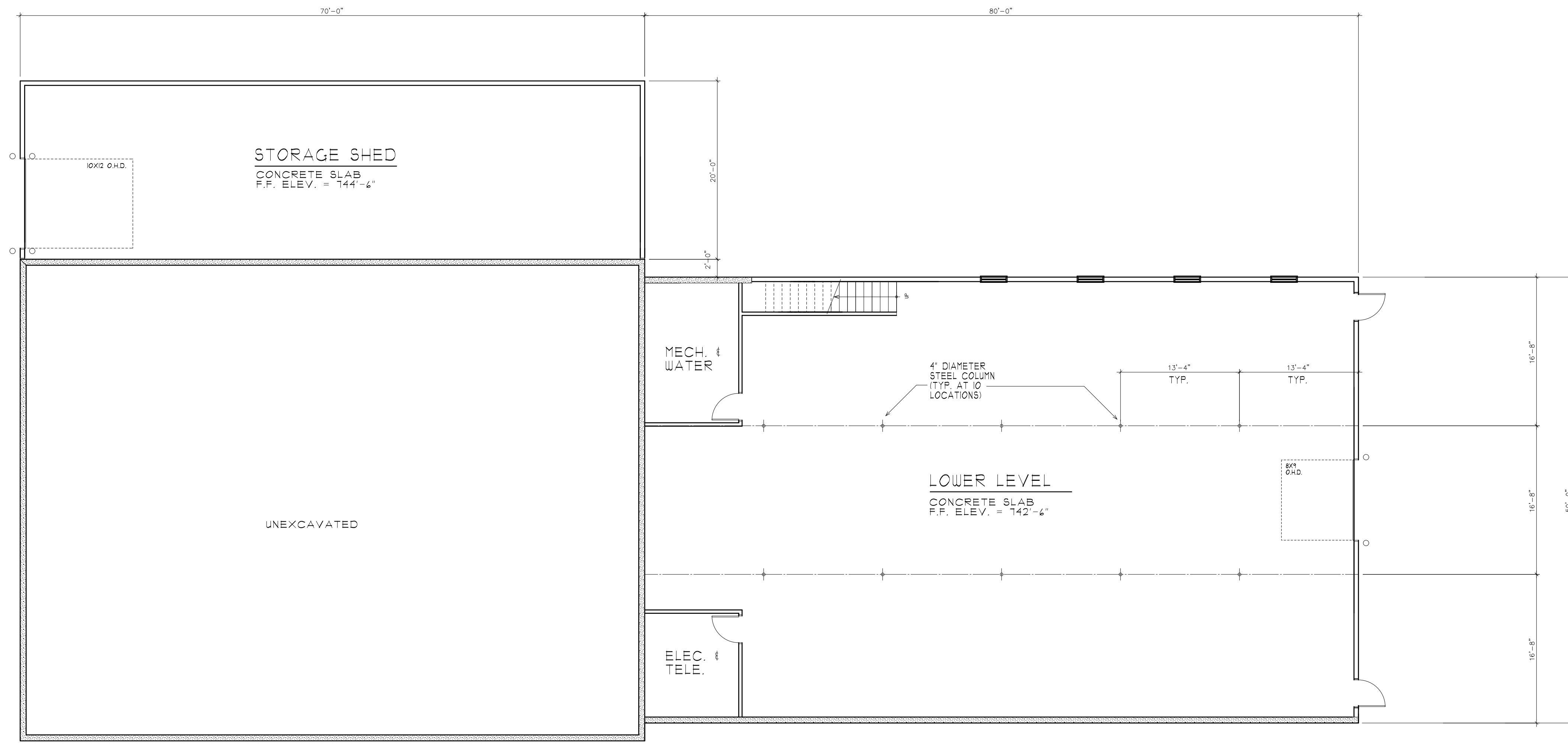




1100 U.S. Route 2
 Berlin, Vermont 05602
 Tel.: (802) 223-3843
 Fax: (802) 223-3888
 berlin@connorcontractinginc.com

278 South Main Street, Suite #3
 St. Albans, Vermont 05478
 Tel.: (802) 527-1955
 Fax: (802) 527-1919
 stalbans@connorcontractinginc.com



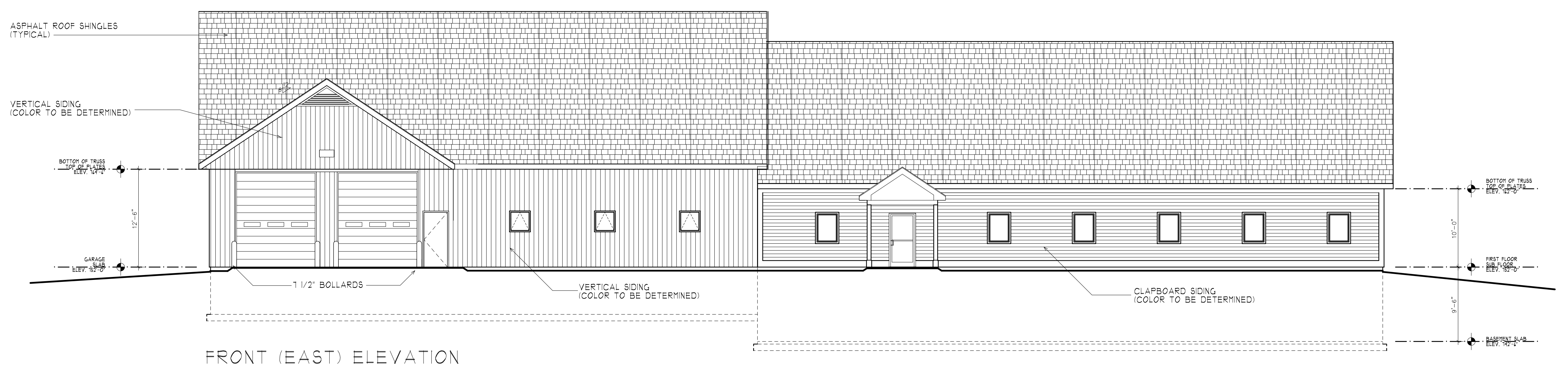
BASEMENT PLAN

REVISIONS		
DRAWN BY	CHECKED BY	DATE

THIS DRAWING IS THE SOLE PROPERTY OF CONNOR CONTRACTING, INC AND IS LOANED SUBJECT TO THE CONDITIONS THAT IT WILL BE RETURNED UPON DEMAND, IT MAY NOT BE REPRODUCED OR COPIED IN WHOLE OR IN PART AND MAY NOT BE USED TO FURNISH INFORMATION TO OTHERS WHETHER FOR DESIGN, CONSTRUCTION, CONSULTATION, ESTIMATING OR OTHER REASONS WITHOUT WRITTEN CONSENT.

PRELIMINARY DRAWINGS
 PROJECT TITLE

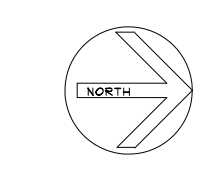
PRELIMINARY-
 SCHEMATIC DESIGN -
 FOR REVIEW ONLY-
 NOT FOR
 CONSTRUCTION-
 REV. AUG. 9, 2018



FRONT (EAST) ELEVATION

WCMHS
 FACILITY
 225 VT RT 14 SOUTH
 EAST MONTPELIER, VT

DRAWING TITLE	
PROPOSED	
DATE	SCALE
JUNE 26, 2018	1/8" = 1'-0"
DRAWN BY	CHECKED BY
PROJ. NO.	FILE NAME
XX-XXX	
DRAWING NUMBER	



A-2