

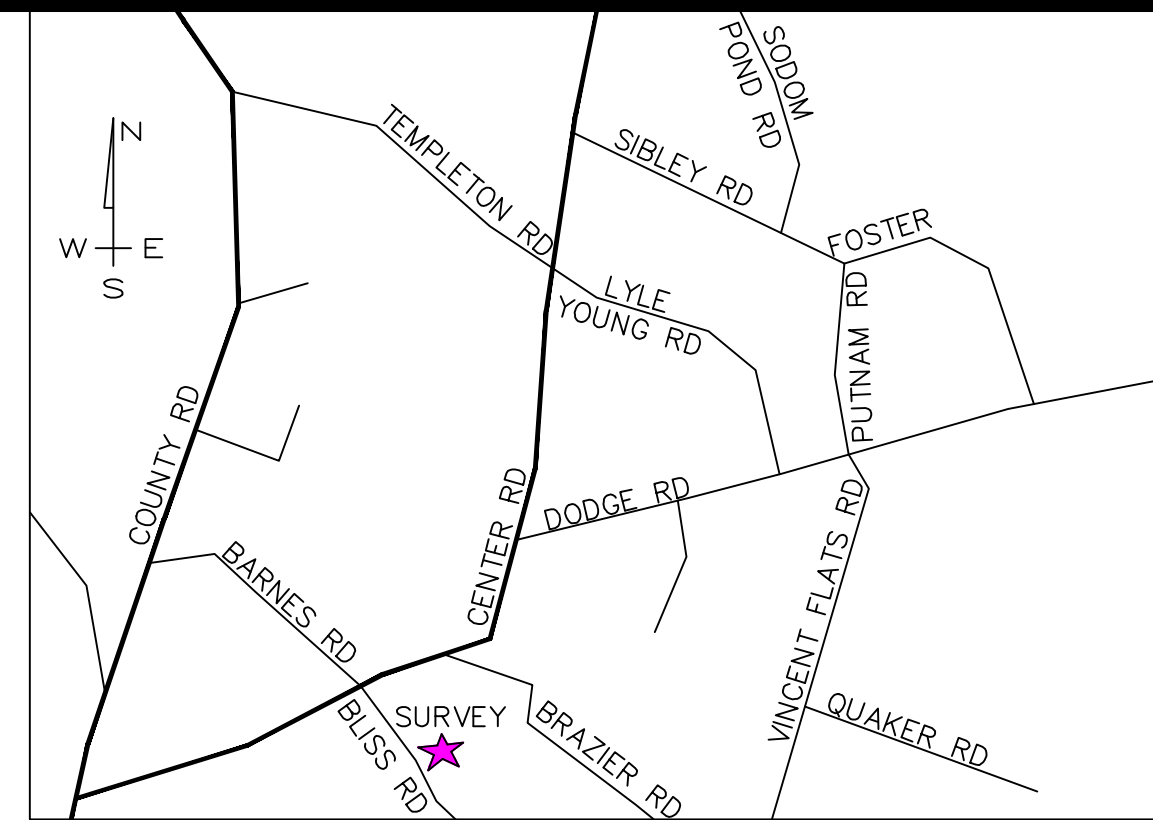
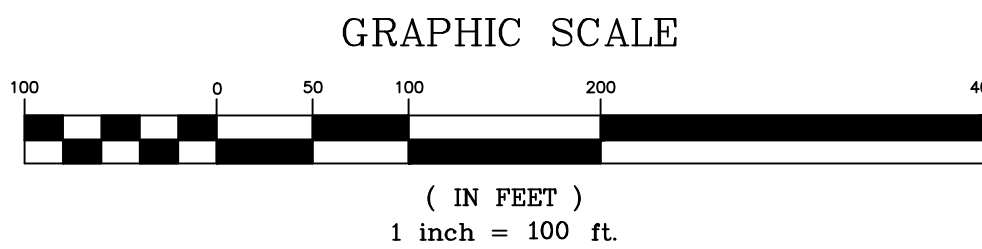
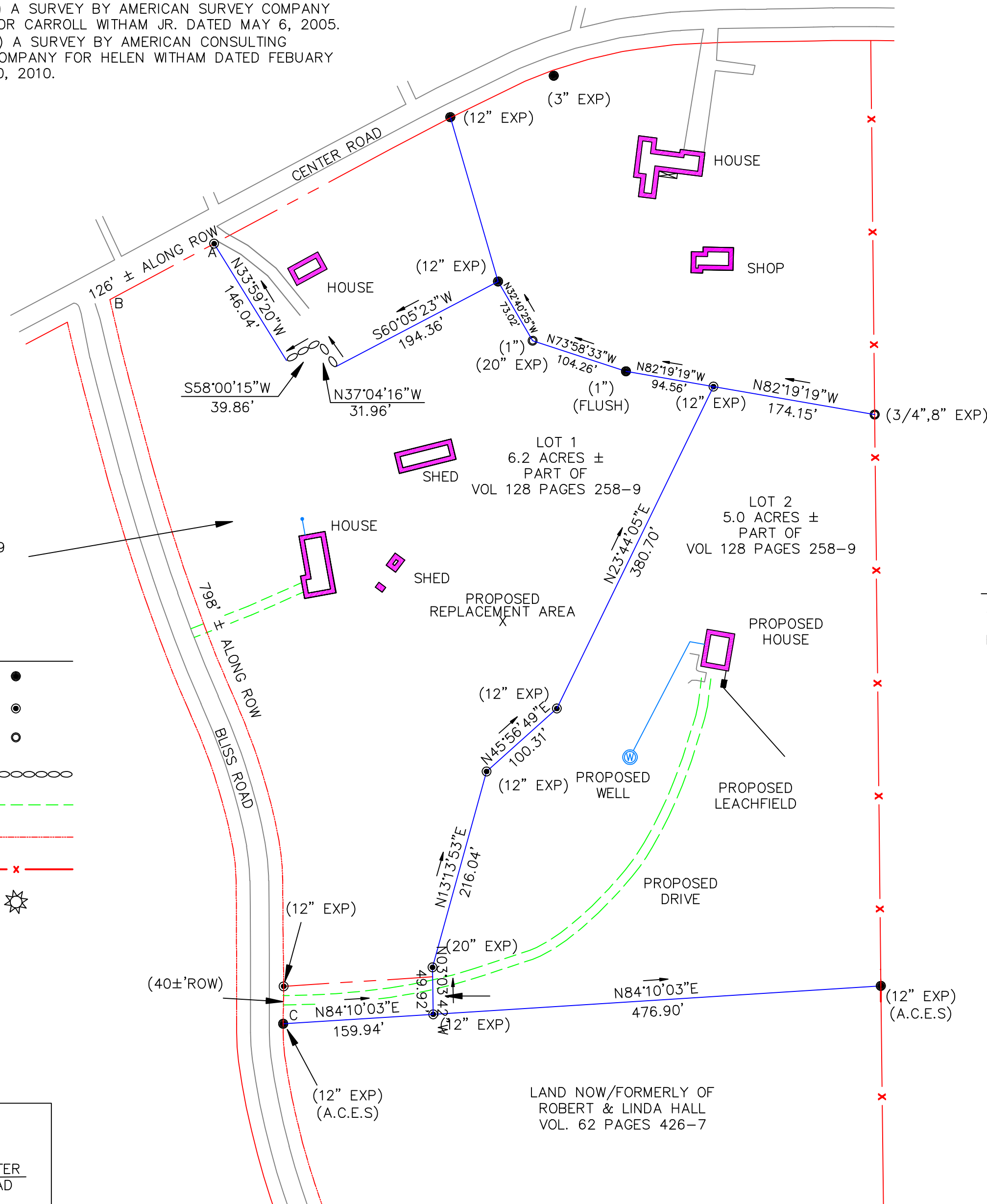
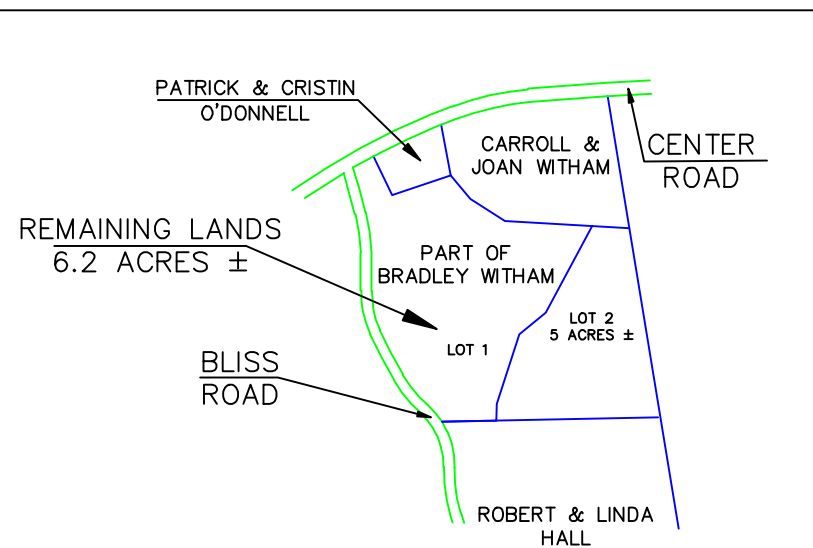
- REFERENCES**
- 1) A SURVEY BY AMERICAN SURVEY COMPANY FOR CARROLL WITHAM JR. DATED MAY 6, 2005.
 - 2) A SURVEY BY AMERICAN CONSULTING COMPANY FOR HELEN WITHAM DATED FEBRUARY 10, 2010.

REMAINING LANDS OF BRADLEY WITHAM PART OF VOL. 128 PAGES 258-9

LEGEND

- IRON ROD FOUND #5 (HT.) ●
- IRON ROD SET-CAPPED #5 (HT.) ●
- IRON PIPE FOUND (SIZE, HT.) ○
- STONE WALL ○○○○○○
- EDGE OF TRAVEL - - - - -
- RIGHT OF WAY - - - - -
- FENCE REMNANTS - x - - - - -
- ASTRONOMIC NORTH ☀

INTERMEDIATE LOCUS MAP
(NOT TO SCALE)



LOCATION MAP
(NOT TO SCALE)

LAND NOW/FORMERLY OF JAY E. & EMILY G. GOYETTE VOL. 42 PAGES 432-33

NOTES

- 1) A 40± RIGHT OF WAY TO BE CONVEYED TO SUSAN WITHAM FOR ACCESS TO LOT#2

TIE LINES

AB	S59°38'08"W	125.88'
BC	S15°39'40"E	791.91'

CERTIFICATION

THIS SURVEY WAS COMPLETED BASED ON DEEDS AND SURVEYS FOUND ON RECORD IN THE EAST MONTPELIER MUNICIPAL OFFICE AND ON EXISTING PHYSICAL EVIDENCE FOUND AT THE SITE. THE SURVEY WAS COMPLETED BY A FIVE SECOND TOTAL STATION CLOSED TRAVERSE WITH A PRECISION RATIO OF 1:200,633. THE BEARINGS ARE ASTRONOMICALLY TRUE AND THE TRUE MERIDIAN IS BASED ON SOLAR OBSERVATIONS TAKEN BY THE HOUR ANGLE METHOD AT 44°-17'-01" NORTH LATITUDE AND 72°-31'-44" WEST LONGITUDE ON MAY 5, 2005. BLISS ROAD AND CENTER ROAD ARE ASSUMED TO BE IN THE APPROXIMATE CENTER OF A THREE ROD RIGHT OF WAY AND ACCORDING TO THE VERMONT AGENCY OF TRANSPORTATION RECORDS IT IS A CLASS THREE TOWN ROAD. THE PROPERTY MAY BE ENCUMBERED BY EXISTING EASEMENTS NOT DEPICTED ON THE SURVEY INCLUDING, BUT NOT LIMITED TO POWER, TELEPHONE, AND WATER RIGHTS.

A SUBDIVISION SURVEY IN
EAST MONTPELIER, VERMONT FOR
BRADLEY WITHAM

★ ★ ⊕ ★ ★

AMERICAN SURVEY COMPANY
SURVEYING, MONUMENTING, AND MAPPING
THE LANDS OF AMERICA™

VERMONT OFFICE WILLIAMSTOWN, VT

CHIEF OF PARTY C.RUSSO

COMPILED APRIL 15, 2017

APPROVED