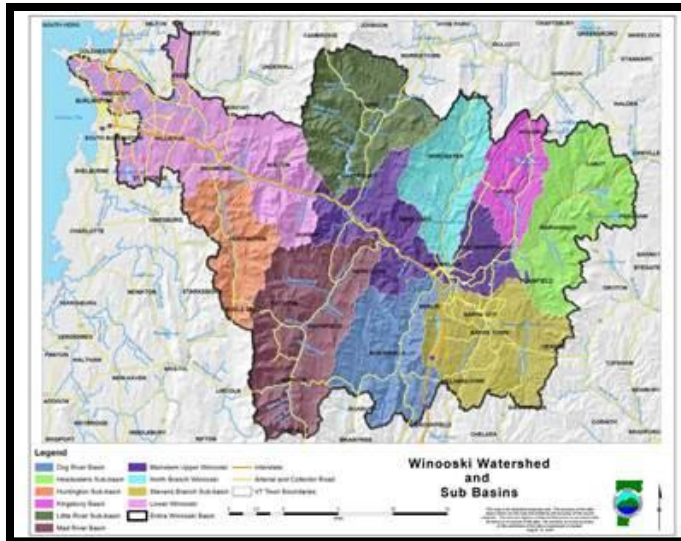


WINOOSKI RIVER TACTICAL BASIN PLAN



Tactical basin plans focus on the projects or actions needed to protect or restore specific waters and identify appropriate funding sources to complete the work, based on monitoring and assessment data. The plan will guide all watershed work supported by the Watershed Management Division in the basin. The issues identified in the plan are the ones that will be prioritized for management and funding attention. Tactical Basin Plans integrate priority items from complementary plans, including river corridor plans, stormwater master plans, backroads inventories, and agricultural environmental assessments.

Stressors within the Winooski Basin include: channel and land erosion, nutrient loading, pathogens like e. coli, invasive species, and flow alterations from dams and water withdrawals. If you are aware of challenges, such as eroding dirt roads, poor culvert placements, stream or lakeshore erosion, clear-cutting, etc., it's important to voice them so they can be evaluated for inclusion in the plan. If potential problems are not included, they may not receive support from ANR.

Vermont Statute provides RPCs with the opportunity to prioritize projects. CVRPC will set priorities for the Winooski Basin in 2018. This is an opportunity to learn more about the Basin Planning process and provide input for your community!

For information:

- visit Sample Basin Plans: <http://dec.vermont.gov/watershed/map/basin-planning>.
- contact Karen Bates, DEC Watershed Coordinator, karen.bates@vermont.gov, 490-6144.
- contact Pam DeAndrea, CVRPC Senior Planner, deandrea@cvregion.com, 229-0389.