

# NOTICE

## **TOWN OF EAST MONTPELIER RESILIENT ROADS COMMITTEE PUBLIC MEETING ON ROADSIDE ASH TREE MANAGEMENT**

### **FOLLOWED BY**

## **TOWN OF EAST MONTPELIER TREE WARDEN PUBLIC HEARING REGARDING TREE REMOVAL**

**Tuesday, September 15, 2020  
6:30 p.m.**

**Hosted at the Municipal Office Building, Which is Currently Closed to the Public Due to Covid-19  
Public and Committee Members are Encouraged to Participate Remotely, as Explained Below**

The East Montpelier Resilient Roads Committee will hold a Public Informational Meeting on roadside ash tree management as related to the threat of emerald ash borer infestation and tree loss. The meeting will be followed directly by a Public Hearing, pursuant to 24 V.S.A. §2509 (the state statute on tree warden hearings), conducted by Paul Cate, the Town Tree Warden, for a project that involves removal of ash trees along Dodge Road and Johnson Road, as well as a large pine tree at the southwest corner of the Dodge and Johnson Roads intersection.

The informational meeting will start at 6:30 p.m. The hearing will begin at 7:30.

The Tree Warden will accept testimony on the proposed Dodge and Johnson Roads project from interested parties, which includes affected landowners, both at the hearing and in writing at the town office (by mail to 40 Kelton Road, PO Box 157, East Montpelier, VT 05651; by email to [manager@eastmontpeliervt.org](mailto:manager@eastmontpeliervt.org)) on or before the close of business on September 22, 2020. The Warden and Committee will also welcome comments from all in attendance on the Town's options for responding to the ash tree infestation threat and this project in particular. The project includes removal of ash trees along Dodge Road, Johnson Road and the eastern end of the Dodge Road Trail. Also included is possible removal of a single pine tree at the intersection of the two roads in order to improve conditions for an adjacent ash tree that the Town may preserve using long-term insecticide treatments.

### **To Attend the Meeting &/or Hearing:**

See information & participation options here: <https://eastmontpeliervt.org/september-15-2020-ash-tree-management-meeting-hearing/>

To join by web browser: <https://us02web.zoom.us/j/81482334480>

By phone: 1 + (646) 558-8656 [this is not a toll-free number]

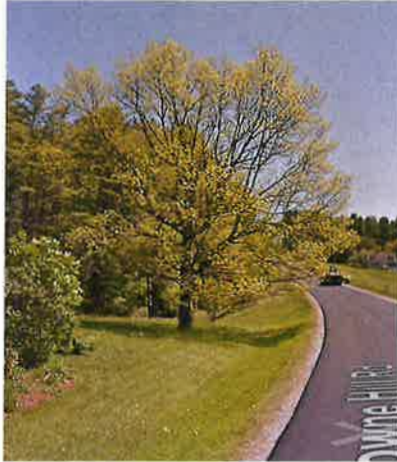
Meeting ID: 814 8233 4480

Participation (in person or in writing) in a local regulatory proceeding is recommended in order to preserve the right to take any subsequent appeal. Questions may be directed to Bruce Johnson, East Montpelier Town Administrator, at 802-223-3313 x 204 or [manager@eastmontpeliervt.org](mailto:manager@eastmontpeliervt.org).

Information on the Resilient Roads Committee may be found on the Town website at:  
<https://eastmontpeliervt.org/boards-commision/roadside-vegetation-management/>

## **Invasive Emerald Ash Borer - a threat to local ash trees**

Have you heard that the invasive Emerald Ash Borer (EAB) beetle, a threat to all our ash trees, was detected in Vermont in 2018, and is now in the area around East Montpelier? In the past, chestnut blight, Dutch elm disease and butternut canker decimated entire species of once-common forest trees, and now EAB has that potential as well. Michigan, Pennsylvania, and Ohio have been hit hard since EAB was first discovered in the U.S. near Detroit in 2002. Virtually all of the ash trees in certain areas are gone now.



One problem we are facing is that once ash trees in public road right of ways (ROWs) are infested and start dying, they become a danger to the public and to town road crews. This is because they are extremely brittle, making them difficult and expensive to cut down safely.

The town has an initiative to stay ahead of this serious new danger and will maintain an active dialogue with town residents to keep them informed. If you saw people staring up at roadside trees in early summer of 2019, they were members of the Resilient Roads Committee (RRC) mapping and gathering information about ash trees in the town's ROWs. The Central Vermont Regional Planning Commission and the Vermont Urban & Community Forestry Program (UCFP) have been helping the town develop a plan for how to proceed, based on the experience of other states that are further along in the process.

After inventorying all ROW ash trees over 6-inch diameter, the RRC produced an interim ash tree management plan that envisions staged, preemptive removal of all of the ROW ash trees. Utilities are already removing ash trees near powerlines along our roads. Along with tree removal, the RRC has selected a small number of iconic roadside ashes to treat with a preventative insecticide, which is also an option for landowners with landscape ash trees.

The town is now testing how the process of tree removal will go. The RRC is completing a pilot project this year, funded in part through a grant from UCFP, that includes removal ash trees along Gallison Hill Road bordering U-32 property, as well as ash trees along nearby Schoolhouse and Wheeler roads.

The RRC encourages public input as it evaluates the pilot project and completes the town's ash tree management plan. A public informational meeting was held at U-32 last January and another is scheduled for mid-September.

### **Watch Front Porch Forum for updates**

See links below for more information:

<https://eastmontpeliervt.org/boards-commision/roadside-vegetation-management/>

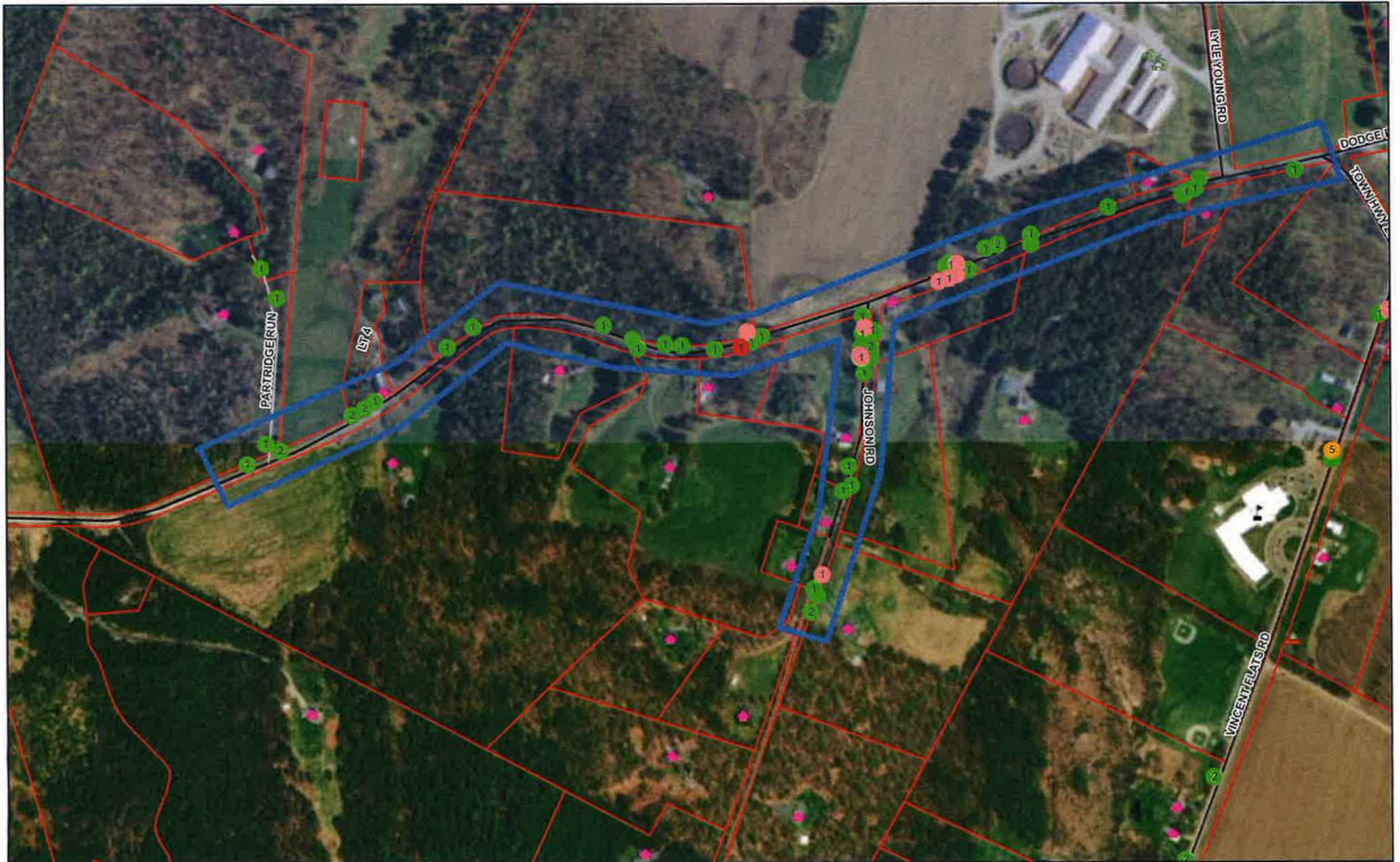
<https://vtinvasives.org/invasive/emerald-ash-borer>

<https://vtcommunityforestry.org/community-planning/tree-pests>

(27 Aug. 2020)



# Road Segments In Dodge & Johnson Roads Ash Tree Management Project

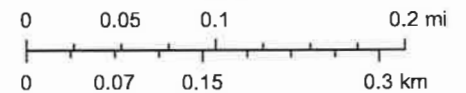


8/27/2020, 3:24:18 PM

Ash Tree Inventory

- Good
- Fair
- Poor
- Dead

1:9,028



Source: Esri, Maxar, GeoEye, Earthstar Geographics, CNES/Airbus DS,

Web AppBuilder for ArcGIS

VCGI, USDA FSA, GeoEye, Maxar |

## The Vermont Statutes Online

### Title 24 : Municipal And County Government

#### Chapter 067 : Parks And Shade Trees

(Cite as: 24 V.S.A. § 2502)

#### § 2502. Tree wardens and preservation of shade trees

Shade and ornamental trees within the limits of public ways and places shall be under the control of the tree warden. The tree warden may plan and implement a town or community shade tree preservation program for the purpose of shading and beautifying public ways and places by planting new trees and shrubs; by maintaining the health, appearance, and safety of existing trees through feeding, pruning, and protecting them from noxious insect and disease pests and by removing diseased, dying, or dead trees which create a hazard to public safety or threaten the effectiveness of disease or insect control programs. (Amended 1969, No. 238 (Adj. Sess.), § 1.)

## The Vermont Statutes Online

### Title 24 : Municipal And County Government

#### Chapter 067 : Parks And Shade Trees

(Cite as: 24 V.S.A. § 2509)

#### § 2509. Cutting shade trees; hearing

(a) A public shade tree within the residential part of a municipality shall not be felled without a public hearing by the tree warden, except that when it is infested with or infected by a recognized tree pest, or when it constitutes a hazard to public safety, no hearing shall be required.

(b) In all cases the decision of the tree warden shall be final, except that when the tree warden is an interested party or when a party in interest so requests in writing, such final decision shall be made by the legislative body of the municipality. (Amended 1969, No. 238 (Adj. Sess.), § 6; 2017, No. 74, § 100.)