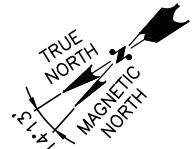
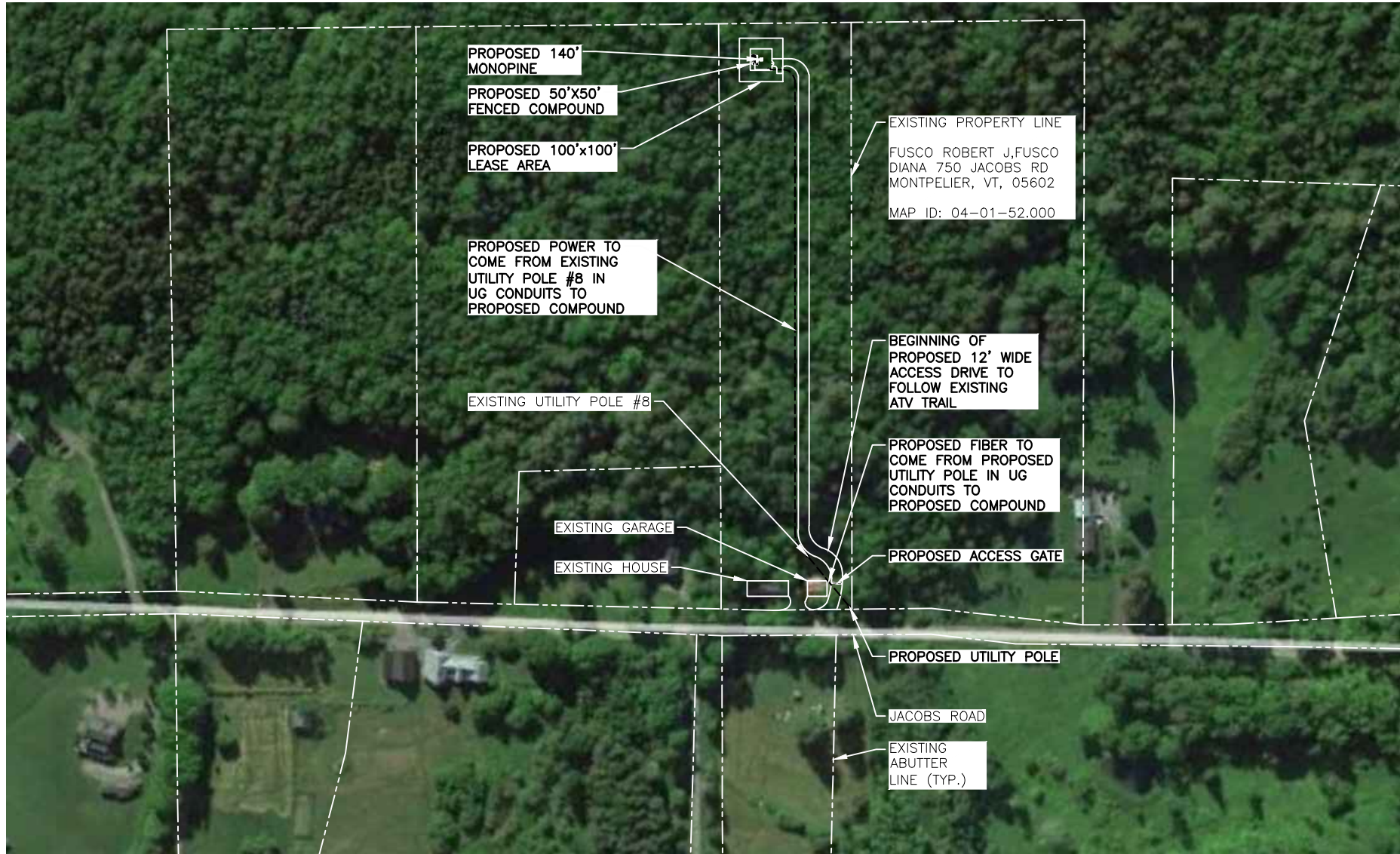


**NOTE:**  
 ACCESS TO PROPOSED TELECOMMUNICATIONS FACILITY SITE IS PRELIMINARY AND UNDER REVIEW PRIOR TO APPROVAL

**TOWER COORDINATES:**  
 44.31372 N  
 72.55081 W  
 44° 18' 49.4" N  
 72° 33' 02.9" W



**LOCUS PLAN**  
 22x34 SCALE: 1"=150'  
 11x17 SCALE: 1"=300'

1  
 LE-1



**HG HUDSON**  
 Design Group LLC  
 45 BEECHWOOD DRIVE  
 NORTH ANDOVER, MA 01845  
 TEL: (978) 557-5553  
 FAX: (978) 336-5586

**CENTERLINE**  
 COMMUNICATIONS  
 750 WEST CENTER STREET  
 SUITE #301  
 WEST BRIDGEWATER, MA 02379

**SITE NUMBER: VT4274**  
**SITE NAME: EAST MONTPELIER**  
 750 JACOBS RD,  
 MONTPELIER, VT 05602  
 WASHINGTON COUNTY

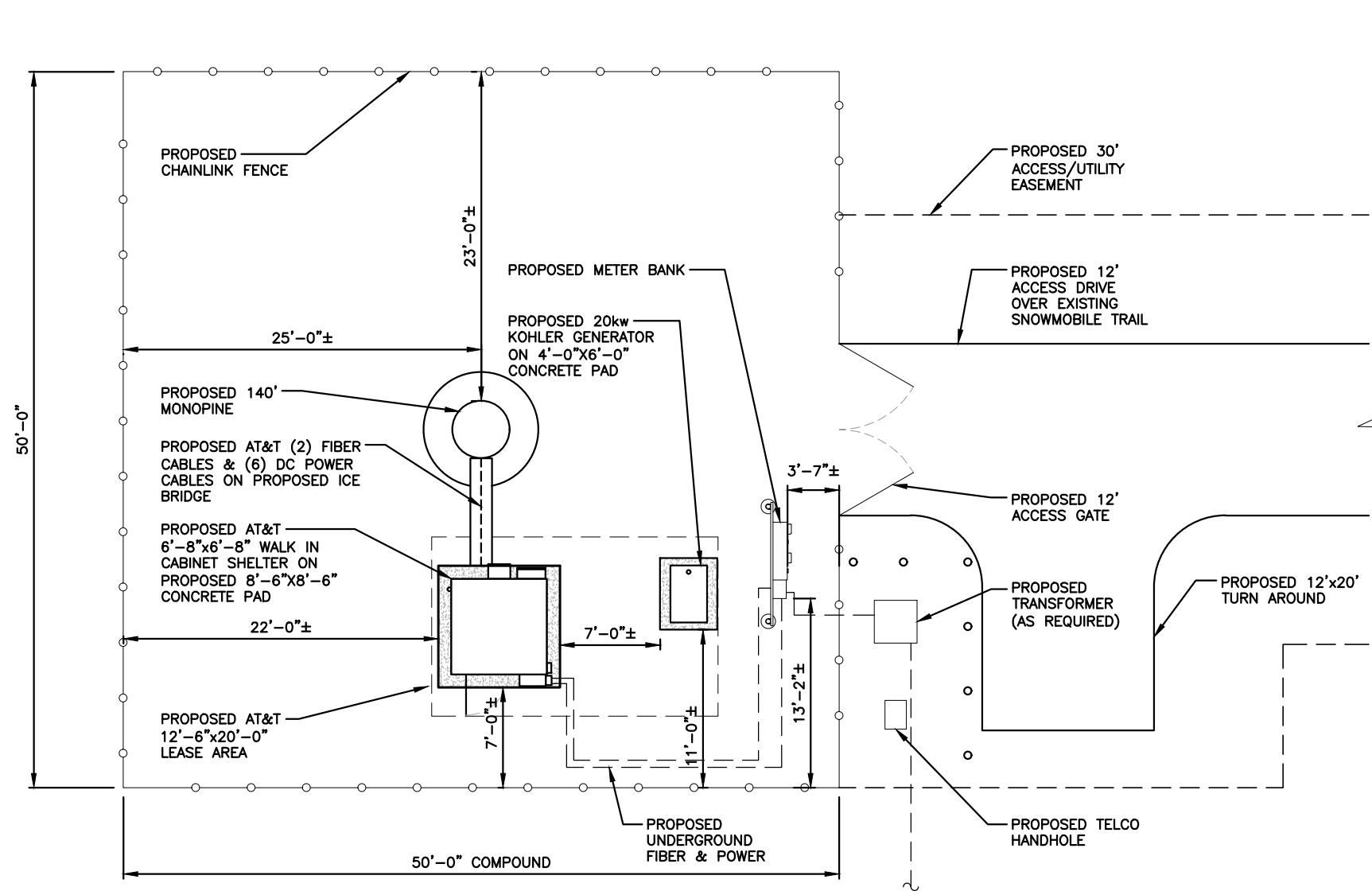
**at&t**  
 550 COCHITUATE ROAD  
 FRAMINGHAM, MA 01701

0	11/11/20	ISSUED FOR REVIEW	AR	JC	DPH
NO.	DATE	REVISIONS	BY	CHK	APP'D
SCALE: AS SHOWN		DESIGNED BY: JC	DRAWN BY: AR		

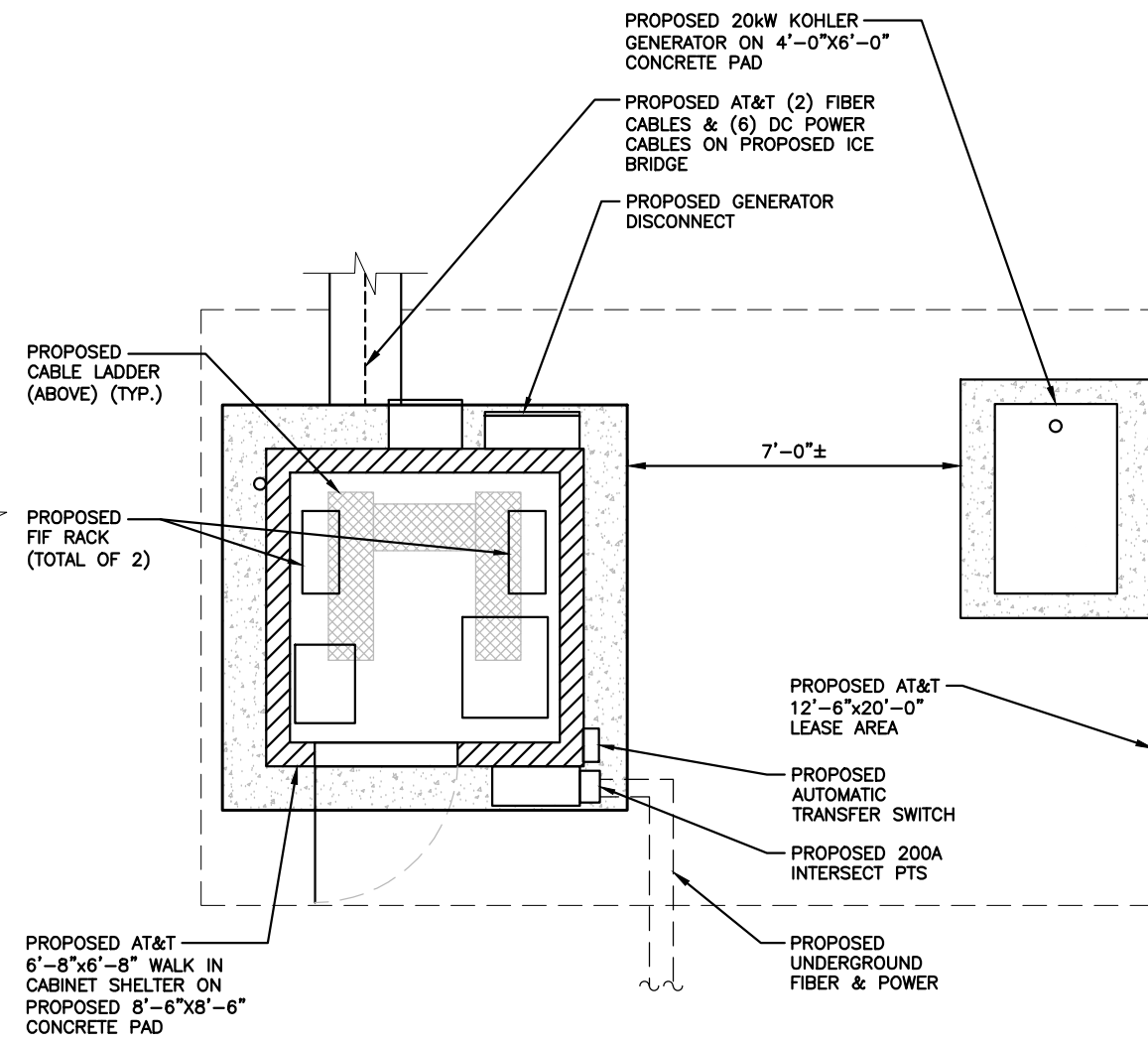
<b>AT&amp;T</b>		
LOCUS PLAN (NSB)		
SITE NUMBER	DRAWING NUMBER	REV
VT4274	LE-1	0

**NOTE:**  
PROPOSED POWER, TELCO, & GROUNDING TO COME FROM EXISTING SOURCES (ROUTING TO BE DETERMINED)

**NOTE:**  
REFER TO THE FINAL RF DATA SHEET FOR FINAL ANTENNA SETTINGS.



**COMPOUND PLAN**  
22x34 SCALE: 3/16"=1'-0"  
11x17 SCALE: 3/32"=1'-0"  
1  
LE-2



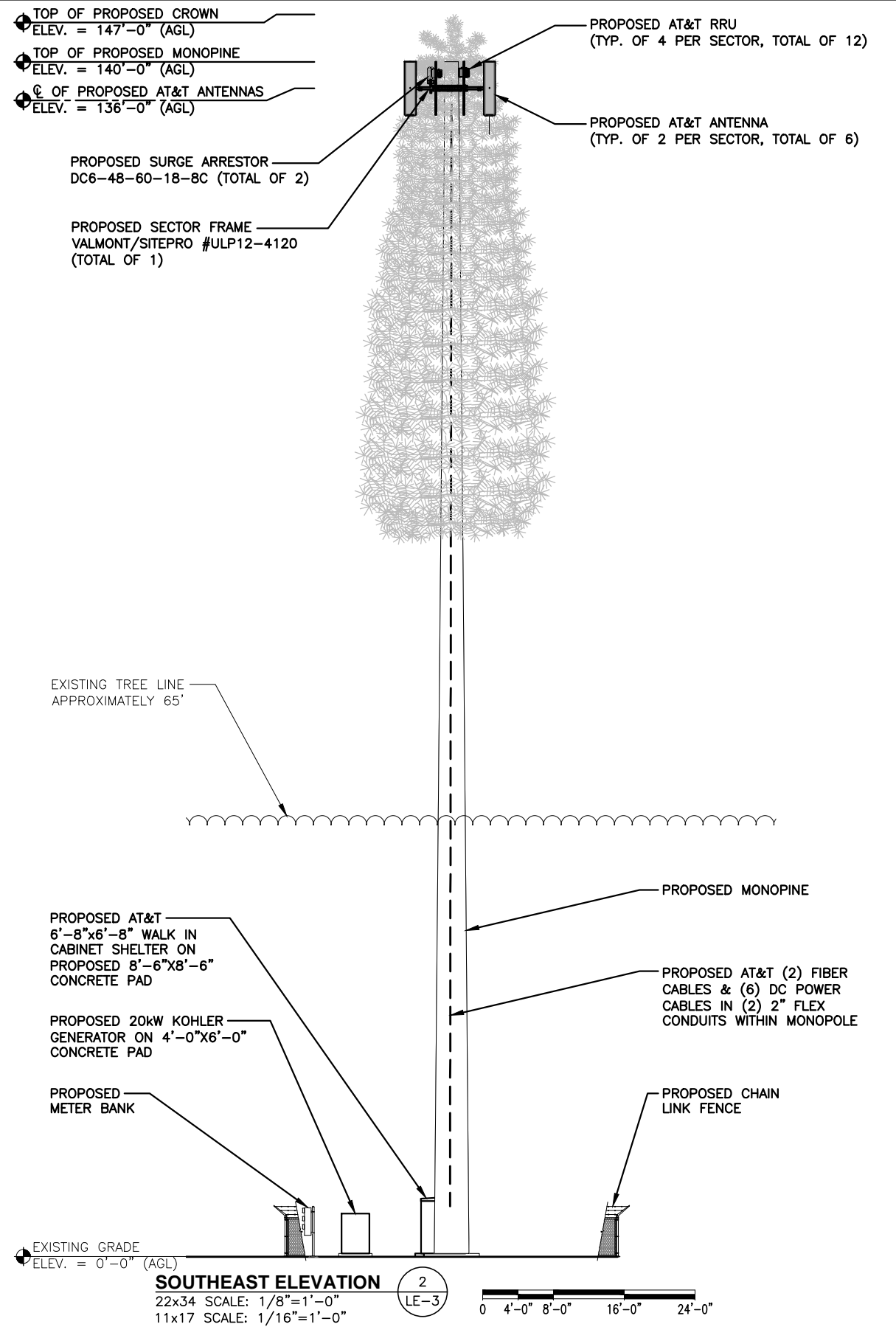
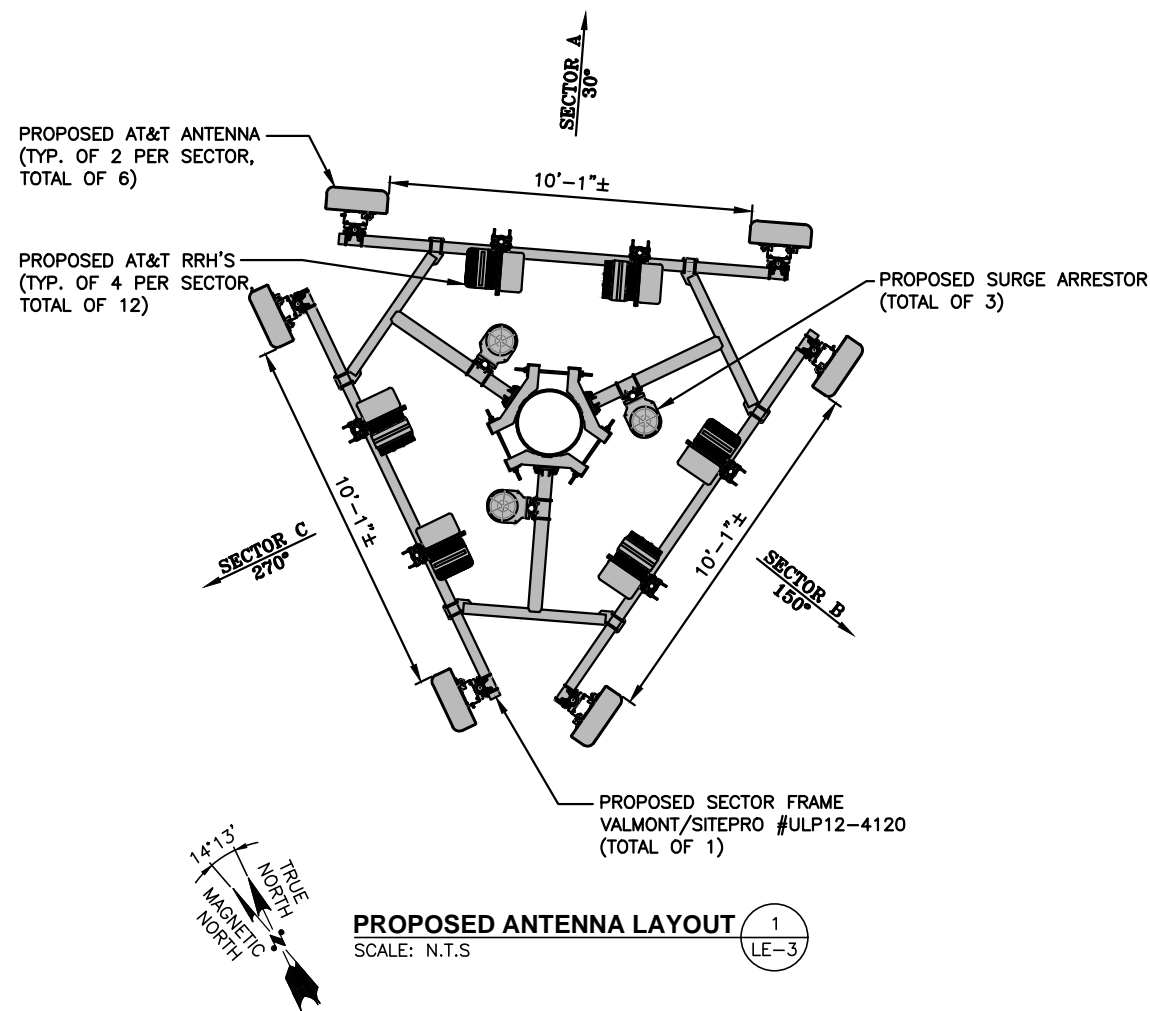
**EQUIPMENT PLAN**  
22x34 SCALE: 1/2"=1'-0"  
11x17 SCALE: 1/4"=1'-0"  
2  
LE-2

NO.	DATE	REVISIONS	BY	CHK	APP'D
0	11/11/20	ISSUED FOR REVIEW	AR	JC	DPH
SCALE: AS SHOWN		DESIGNED BY: JC	DRAWN BY: AR		

AT&T		
COMPOUND PLAN & EQUIPMENT LAYOUT (NSB)		
SITE NUMBER	DRAWING NUMBER	REV
VT4274	LE-2	0

**NOTE:**  
 PROPOSED POWER, TELCO, &  
 GROUNDING TO COME FROM  
 EXISTING SOURCES (ROUTING  
 TO BE DETERMINED)

**NOTE:**  
 REFER TO THE FINAL RF DATA  
 SHEET FOR FINAL ANTENNA  
 SETTINGS.



NO.	DATE	ISSUED FOR REVIEW	AR	JC	DPH
0	11/11/20	ISSUED FOR REVIEW	AR	JC	DPH
SCALE: AS SHOWN		DESIGNED BY: JC	DRAWN BY: AR		

AT&T		
ANTENNA LAYOUT & ELEVATION (NSB)		
SITE NUMBER	DRAWING NUMBER	REV
VT4274	LE-3	0