

Photographic Simulation Package

Proposed Wireless Telecommunications Facility:

VT4274 East Montpelier
750 Jacobs Road
Montpelier, VT 05602

- Balloon test conducted 9/8/2020
- Proposed new 140 foot AGL antenna structure

Package prepared by:

Virtual Site Simulations, LLC
24 Salt Pond Road
Suite C3
South Kingstown, Rhode Island 02879

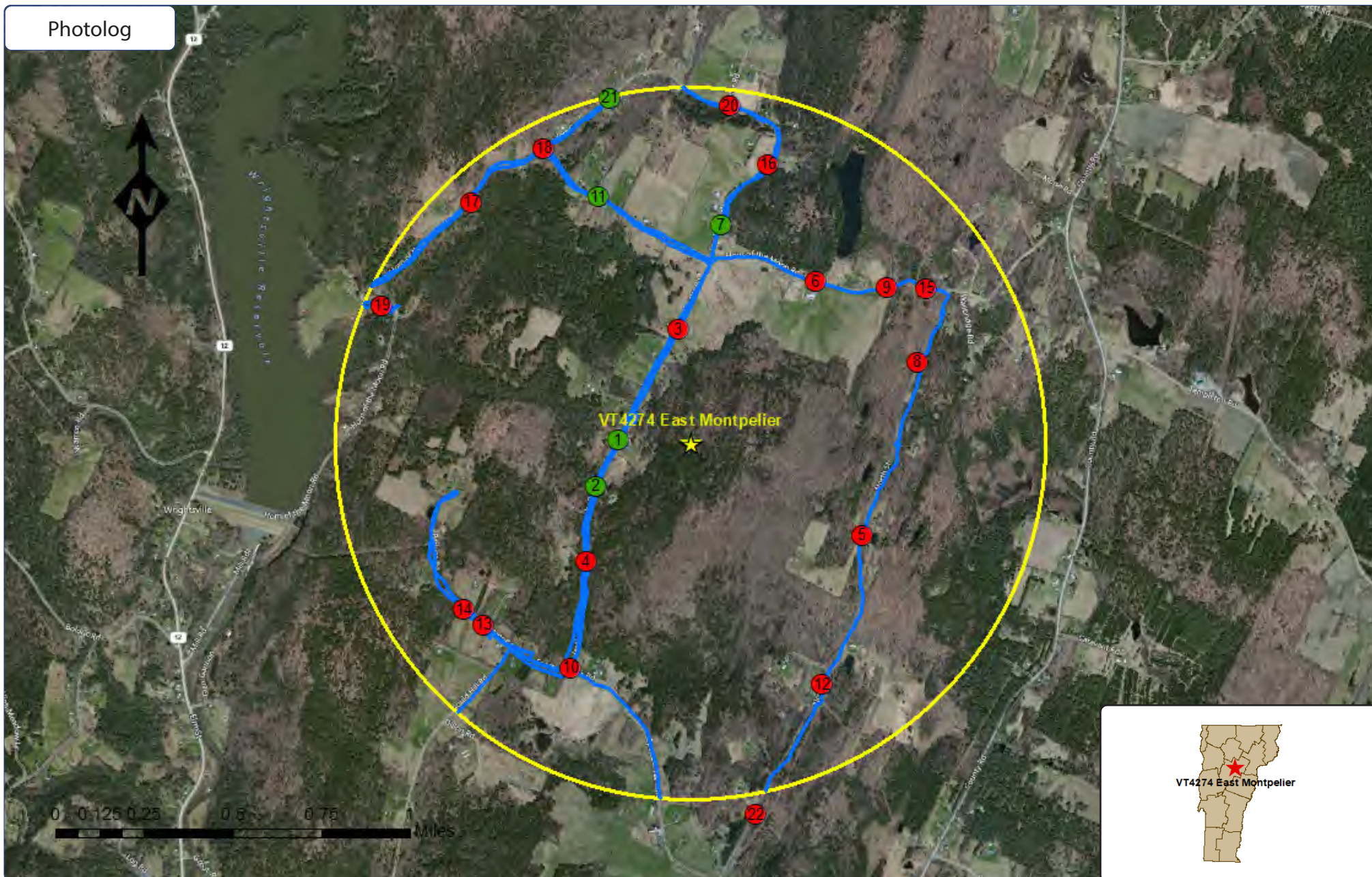
www.VirtualSiteSimulations.com
www.ThinkVSSFirst.com



Photo Simulations are for demonstration purposes only. It should not be used in any other fashion or with any other intent. The accuracy of the resulting data is not guaranteed and is not for redistribution



Photolog



Wireless Telecommunications Facility:

VT4274 East Montpelier
750 Jacobs Road
Montpelier, VT 05602

Legend:

- ★ Facility Location
- 1 Mile Radius
- Reconnaissance Track Log
- ⊗ Photo location - Balloon visible - Year Round Visibility
- ⊙ Photo location - Balloon visible - Obscured Visibility
- ⊗ Photo location - Balloon NOT visible

Photo Simulations are for demonstration purposes only. It should not be used in any other fashion or with any other intent. The accuracy of the resulting data is not guaranteed and is not for redistribution



Existing



Photo #	Location	Gps Coordinates		Distance to site	Orientation	Bearing to site	Visibility
1	680 Jacobs Rd	44.31387	-72.55491	0.2 Miles	West	93	Year Round

Site: VT4274 East Montpelier

Photo Simulations are for demonstration purposes only. It should not be used in any other fashion or with any other intent. The accuracy of the resulting data is not guaranteed and is not for redistribution





Photo #	Location	Gps Coordinates		Distance to site	Orientation	Bearing to site	Visibility
1	680 Jacobs Rd	44.31387	-72.55491	0.2 Miles	West	93	Year Round

Site: VT4274 East Montpelier

Photo Simulations are for demonstration purposes only. It should not be used in any other fashion or with any other intent. The accuracy of the resulting data is not guaranteed and is not for redistribution



Existing



Photo #	Location	Gps Coordinates		Distance to site	Orientation	Bearing to site	Visibility
2	530 Jacobs Rd	44.312	-72.55615	0.29 Miles	South-West	66	Year Round

Site: VT4274 East Montpelier

Photo Simulations are for demonstration purposes only. It should not be used in any other fashion or with any other intent. The accuracy of the resulting data is not guaranteed and is not for redistribution





Photo #	Location	Gps Coordinates		Distance to site	Orientation	Bearing to site	Visibility
2	530 Jacobs Rd	44.312	-72.55615	0.29 Miles	South-West	66	Year Round

Site: VT4274 East Montpelier

Photo Simulations are for demonstration purposes only. It should not be used in any other fashion or with any other intent. The accuracy of the resulting data is not guaranteed and is not for redistribution



Existing

Balloon not visible from this location



Photo #	Location	Gps Coordinates		Distance to site	Orientation	Bearing to site	Visibility
3	925 Jacobs Rd	44.31836	-72.55146	0.32 Miles	North	174	Not Visible

Site: VT4274 East Montpelier

Photo Simulations are for demonstration purposes only. It should not be used in any other fashion or with any other intent. The accuracy of the resulting data is not guaranteed and is not for redistribution



Existing

Balloon not visible from this location



Photo #	Location	Gps Coordinates		Distance to site	Orientation	Bearing to site	Visibility
4	335 Jacobs Rd	44.30894	-72.55674	0.44 Miles	South-West	42	Not Visible

Site: VT4274 East Montpelier

Photo Simulations are for demonstration purposes only. It should not be used in any other fashion or with any other intent. The accuracy of the resulting data is not guaranteed and is not for redistribution



Existing

Balloon not visible from this location



Photo #	Location	Gps Coordinates		Distance to site	Orientation	Bearing to site	Visibility
5	3700 North St	44.30998	-72.54108	0.55 Miles	South-East	298	Not Visible

Site: VT4274 East Montpelier

Photo Simulations are for demonstration purposes only. It should not be used in any other fashion or with any other intent. The accuracy of the resulting data is not guaranteed and is not for redistribution



Existing

Balloon not visible from this location



Photo #	Location	Gps Coordinates		Distance to site	Orientation	Bearing to site	Visibility
6	805 Horn of the Moon Rd	44.32031	-72.54367	0.58 Miles	North-East	218	Not Visible

Site: VT4274 East Montpelier

Photo Simulations are for demonstration purposes only. It should not be used in any other fashion or with any other intent. The accuracy of the resulting data is not guaranteed and is not for redistribution



Existing



Photo #	Location	Gps Coordinates		Distance to site	Orientation	Bearing to site	Visibility
7	127 Sanders Cir	44.3226	-72.54904	0.62 Miles	North	188	Year Round

Site: VT4274 East Montpelier

Photo Simulations are for demonstration purposes only. It should not be used in any other fashion or with any other intent. The accuracy of the resulting data is not guaranteed and is not for redistribution





Photo #	Location	Gps Coordinates		Distance to site	Orientation	Bearing to site	Visibility
7	127 Sanders Cir	44.3226	-72.54904	0.62 Miles	North	188	Year Round

Site: VT4274 East Montpelier

Photo Simulations are for demonstration purposes only. It should not be used in any other fashion or with any other intent. The accuracy of the resulting data is not guaranteed and is not for redistribution



Existing

Balloon not visible from this location



Photo #	Location	Gps Coordinates		Distance to site	Orientation	Bearing to site	Visibility
8	4170 North St	44.317	-72.53789	0.68 Miles	East	250	Not Visible

Site: VT4274 East Montpelier

Photo Simulations are for demonstration purposes only. It should not be used in any other fashion or with any other intent. The accuracy of the resulting data is not guaranteed and is not for redistribution



Existing

Balloon not visible from this location



Photo #	Location	Gps Coordinates		Distance to site	Orientation	Bearing to site	Visibility
9	637 Horn of the Moon Rd	44.32004	-72.53963	0.7 Miles	North-East	232	Not Visible

Site: VT4274 East Montpelier

Photo Simulations are for demonstration purposes only. It should not be used in any other fashion or with any other intent. The accuracy of the resulting data is not guaranteed and is not for redistribution

