

# 2012 FREIGHTLINER BUSINESS CLASS M2 106V

USD \$48,950



## Seller Information

[Clark's Truck Center](#)

Jericho, Vermont 05465

**Phone:** (802) 461-4030

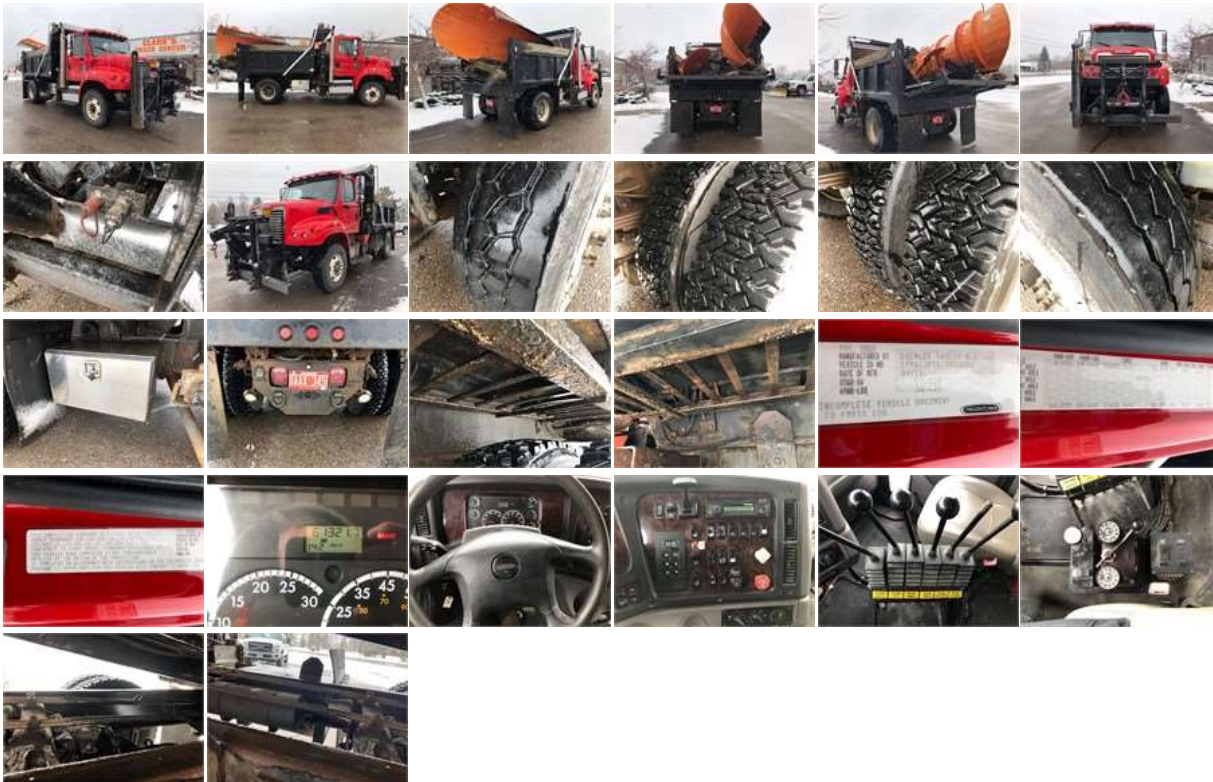
**Contact:** Truck Sales

[Video Chat With This Dealer](#)

**Machine Location:**

📍 [6 Orr Road](#)

[Jericho, Vermont 05465](#)



[Hide Thumbnails](#)

## Description

10' EVEREST SIDE DUMP 11' ONE WAY PLOW 10' WING

## Specifications

Year

2012

Manufacturer

FREIGHTLINER

<b>Model</b>	BUSINESS CLASS M2 106V	<b>VIN</b>	1FVAC3BSXCHBD2283
<b>Condition</b>	Used	<b>Stock Number</b>	CHBD2283
<b>Mileage</b>	61,321 mi	<b>State DOT</b>	Yes
<b>Horsepower</b>	350 hp	<b>Engine Manufacturer</b>	Cummins
<b>Engine Type</b>	ISL	<b>Engine Displacement</b>	8.3 l
<b>Fuel Type</b>	Diesel	<b>Engine Brake</b>	Yes
<b>Turbo</b>	Yes	<b>Transmission</b>	Automatic
<b>Transmission Manufacturer</b>	ALLISON	<b>Transmission Type</b>	Allison RDS
<b>Differential Lock</b>	Yes	<b>Drive</b>	4x2
<b>Suspension</b>	Spring	<b>Number of Rear Axles</b>	Single
<b>Color</b>	RED	<b>Wheels</b>	Aluminum/Steel
<b>Gross Vehicle Weight</b>	Class 8: 33,001	<b>Gross Vehicle Weight</b>	38,620 lb
<b>Rating</b>	pounds or greater		
<b>Front Axle Weight</b>	14,600 lb	<b>Rear Axle Weight</b>	23,000 lb
<b>Drive Side</b>	Left Hand Drive		

[Show As Paragraph](#)